

# tango reflex™

MULTI-MODALITY  
**YAG/SLT LASER**



# tango reflex™



## ■ True Coaxial Illumination (TCI™) Unparalleled Accuracy

True Coaxial Illumination (TCI™) is at the heart of Tango Reflex™. It's technology that provides a stable and titratable red reflex across the entire working diameter within the pupil, that creates the highest degree of contrast, edge definition and detail shadowing for posterior capsule and throughout the vitreous.



TANGO REFLEX™ ENABLES  
YOU TO **EXPAND THE SCOPE  
OF CARE** YOU'RE ABLE TO  
PROVIDE, AND ALL AT THE  
**ABSOLUTELY HIGHEST  
STANDARDS OF SAFETY  
AND EFFICACY.**

## ■ Reflex Technology™ Treatment versatility, patient care quality

The visualisation of the anterior and posterior segments and effectiveness of capsulotomy have been transformed through the development of Ellex's Reflex Technology™ platform, that generates a precise aiming beam and a superior energy beam profile — all within a unique slit lamp illumination tower design that converges and focuses your sight line, target illumination and treatment beam into one optical path.

## ■ Active Cooling Cavity Technology - Greater consistency in clinical results

The Tango Reflex™ active cooling cavity technology ensures utmost accuracy and robustness of laser output over the extended duration of laser firing - minimizing the risk of under-dosing or over-dosing the energy and ensuring the desired therapeutic effect.

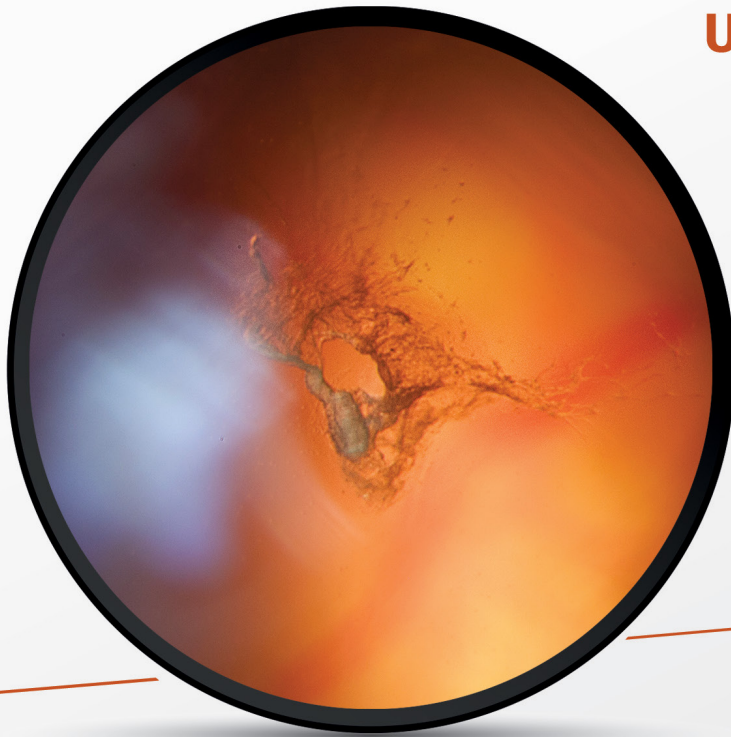


Image courtesy of Karl Brasse, MD

## UNPARALLELED VITREOUS SLIT LAMP EXAMINATION

DESIGNED TO DELIVER  
AN OPTIMAL **RED REFLEX**  
ENHANCING  
**FLOATER VISIBILITY**  
AND **SPATIAL CONTEXT**

### ■ Exceptional Slit Lamp Optics and Visual Experience

Featuring Ellex's proprietary Reflex Technology™, Tango Reflex's visualization in both on-axis and off-axis modes, combined with titratable illumination allows you to accurately visualize **anterior** and **posterior** membranes & opacities, and to assess their position relative to the lens or retina.

It is a solution that can increase certainty and clarity when diagnosing floaters.

### ■ Reflex Technology™ - A powerful solution for posterior membranectomy

YAG membranectomy is a safe and effective firstline in-office laser-based option to eliminate visual disturbance caused by posterior membranes.

Employing TCI to visualize capsular fragments, Tango Reflex™ can be used to visualize and vaporize broken pieces of these membranes & opacities.

This minimizes the potential for focusing errors and the risk of damage to the lens, providing a safe and highly effective tool for the treatment of posterior membranes.

# HDcap™

## PREMIUM CAPSULOTOMY

IT'S ACCURACY THAT  
**MINIMIZES FRINGES AND  
TAGS AND PREVENTS LENS  
DAMAGE** - EVEN IF THE  
LACK OF A RIDGE MAKES  
THE CAPSULE ADHERE  
TO THE OPTIC.

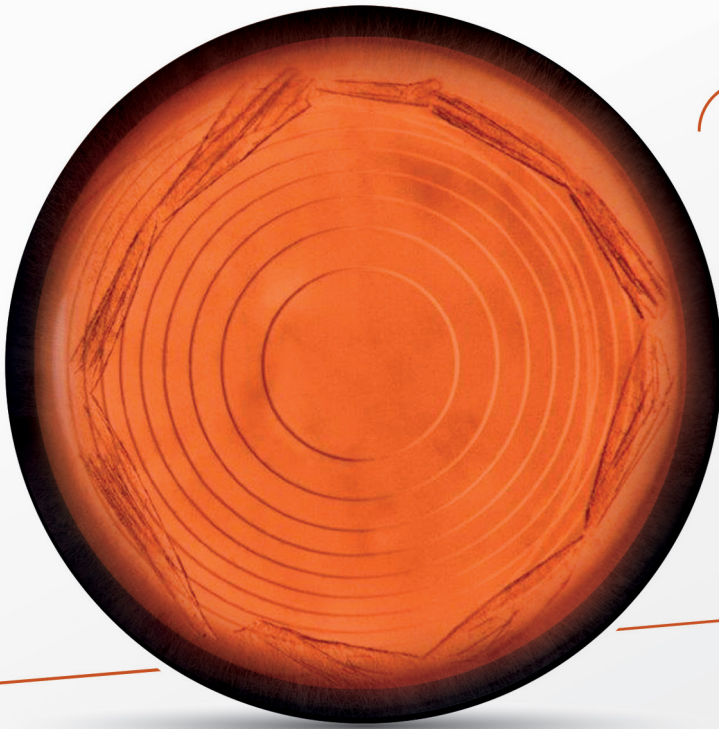


Image courtesy of Karl Brasse, MD

The benefits of Ellex's proprietary Reflex Technology™ extend beyond the safe treatment of posterior membranes.

Employing TCI™ to visualize capsular fragments, Tango Reflex™ can be used to visualize and vaporize broken pieces of fragments and help prevent the common problem of sudden floater development after capsulotomy.

### ■ Green aiming beam

Tango Reflex™ features a precise green aiming beam that provides the highest degree of contrast in red reflex background, resulting in greater targeting accuracy which further enhances the safety profile of YAG laser treatments.

### ■ Precision incision

Ellex's proprietary YAG laser cavity within Tango Reflex™ delivers a four nanosecond Ultra Gaussian pulse at high peak power and can typically achieve the industry's lowest optical breakdown energy at 1.5 mJ in air<sup>1</sup>. That means you can perform capsulotomy at lower, more efficient energy levels. With less energy delivered into the eye, you'll be able to carry out HDcap™ capsulotomy with all types of IOLs, and with significantly less risk of lens pitting.

Choose Tango Reflex™ and you'll secure new levels of accuracy with HDcap™ capsulotomy - a perfectly centered, precise capsulotomy.

# SLT

## ■ Selective Laser Trabeculoplasty Primary therapy for effective, proven glaucoma treatment

SLT is an advanced, non-thermal nanosecond laser treatment that can achieve intraocular pressure (IOP) reduction as effectively as medication, without the associated side effects or compliance problems.<sup>2-4</sup>



## LIGHT STUDY IN FIGURES<sup>2</sup>



**652**

**PATIENTS RANDOMLY ASSIGNED TO SLT**  
(329 PATIENTS) **OR EYE DROPS**  
(323 PATIENTS).



**74,2%**

**OF SLT PATIENTS REACHED TARGET IOP**  
**AND WERE DROP-FREE AT 36 MONTHS.**



**5**

**TIMES LESS MEDICATION-DROP**  
**RELATED ADVERSE EVENTS\* WITH SLT.**

*\*Aesthetic side effect or ocular reactions.*

Selective Laser Trabeculoplasty (SLT) is clinically proven by the LiGHT trial to be **a safe and effective first-line therapy** for the treatment of primary open angle glaucoma or ocular hypertension.<sup>2</sup>

Tango Reflex™ incorporates Ellex's proprietary SLT technology providing superior energy control, a sharp-edged aiming beam and the industry's fastest firing rate of four shots per second.<sup>3</sup>

With an enhanced view of the trabecular meshwork, you'll be able to perform SLT procedures faster and more accurately.

# tango reflex™

## TECHNICAL SPECIFICATIONS

### SLT MODE

Laser Source	Q-switched, frequency doubled Nd:YAG
Wavelength	green: 532 nm
Energy	0.3 to 2.6 mJ per pulse, continuously variable
Pulse Width	3 ns
Spot Size	400 µm
Illumination	LED light source
Aiming Beam	red 635 nm, adjustable intensity

### YAG MODE

Laser Source	Q-switched Nd:YAG
Wavelength	infrared: 1064 nm
Energy	0.3 to 10 mJ per pulse, continuously variable
Pulse Width	4 ns
Burst Mode	1, 2 and 3 pulses per burst, selectable
Spot Size	8 µm
Offset (Anterior and Posterior)	0, 100 to 500 µm, continuously variable
Illumination	True Coaxial Illumination™ (Reflex Technology™)
Aiming Beam	green 515 nm, adjustable intensity

### COMMON FEATURES SPECIFICATION

Repetition Rate	Up to 4 Hertz
Magnification	Optimized for enhanced anterior segment visualization
Cooling	Fan cooled
Electrical Requirements	100-240 VAC, 50/60 Hz, 800 VA
Weight	31 kg, 68 lbs (laser only)
Dimensions (HxWxD)	57 x 75 x 44 cm, 23 x 30 x 18 inches (laser only)
Standard Accessories	Total Solution™ tables, remote display, safety glasses, laser safety sign, dust cover
Optional Accessories	Tonometer mount, Singh Mid-Vitreous lens, SLT laser lens, capsulotomy and iridectomy laser lenses, footswitch, five-position magnification changer, beam splitter, "C" mount camera adapter, video camera adapter, co-observation tube

*Specifications are subject to change without notice*

Tango Reflex™ has US Food and Drug Administration (FDA) clearance for the indications of Posterior Membranectomy, Capsulotomy, Laser Iridotomy and Selective Laser Trabeculoplasty (SLT). © 2021 Ellex

### BIBLIOGRAPHY

- (1) based on system performance testing
- (2) Gazzard G, Konstantakopoulou E, Garway-Heath D, et al. Selective laser trabeculoplasty versus eye drops for first-line treatment of ocular hypertension and glaucoma (LIGHT): a multicentre randomised controlled trial. *Lancet*. 2019, Mar 9;393(10180):1505-16.
- (3) Typical - based on system performance testing
- (4) Katz LJ, Steinmann WC, Kabir A, Molineaux J, Wizov SS, Marcellino G; SLT/Med Study Group. Selective laser trabeculoplasty versus medical therapy as initial treatment of glaucoma; a prospective, randomized trial. *J Glaucoma*. 2012;21:460-8

www.ellex.com



LASER CLASS 3B Nd:YAG: 1064nm, 55mJ Max, 4ns pulse & Nd:YAG: 532nm, 6mJ Max, 3ns pulse  
LASER CLASS 2 Diode Laser 635nm, <1mW Max CW & Diode Laser 515nm, <1mW Max CW

**WARNING: VISIBLE AND INVISIBLE LASER RADIATION - AVOID EXPOSURE TO BEAM**

CLASS 3B LASER PRODUCT per IEC 60825-1:2014



**Manufacturer**  
Ellex Medical Pty Ltd  
3-4 Second Avenue  
Mawson Lakes, SA 5095  
Australia  
Tel: +61 (0)8 7074 8200  
ISO 13485 : 2016

Ellex Inc.  
7138 Shady Oak Road  
Minneapolis, MN 55347  
Tel: 855.767.5784  
Email: marketing@ellex.com

**Headquarters**  
Lumibird Medical  
1, Rue du Bois Joli - CS40015  
63808 Cournon d'Auvergne  
France  
Tel: +33 (0)4 73 745 745

A brand of  **LUMIBIRD MEDICAL**

QUANTEL MEDICAL - ELLEX - OPTOTEK MEDICAL